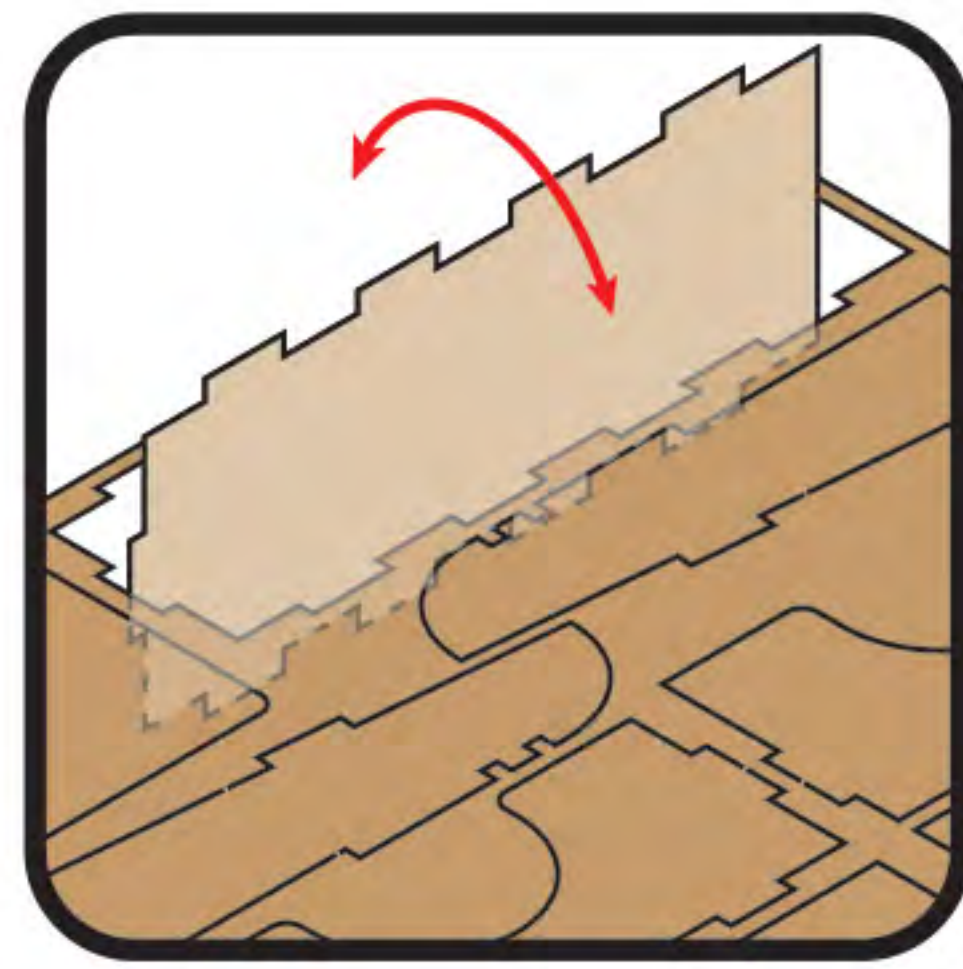


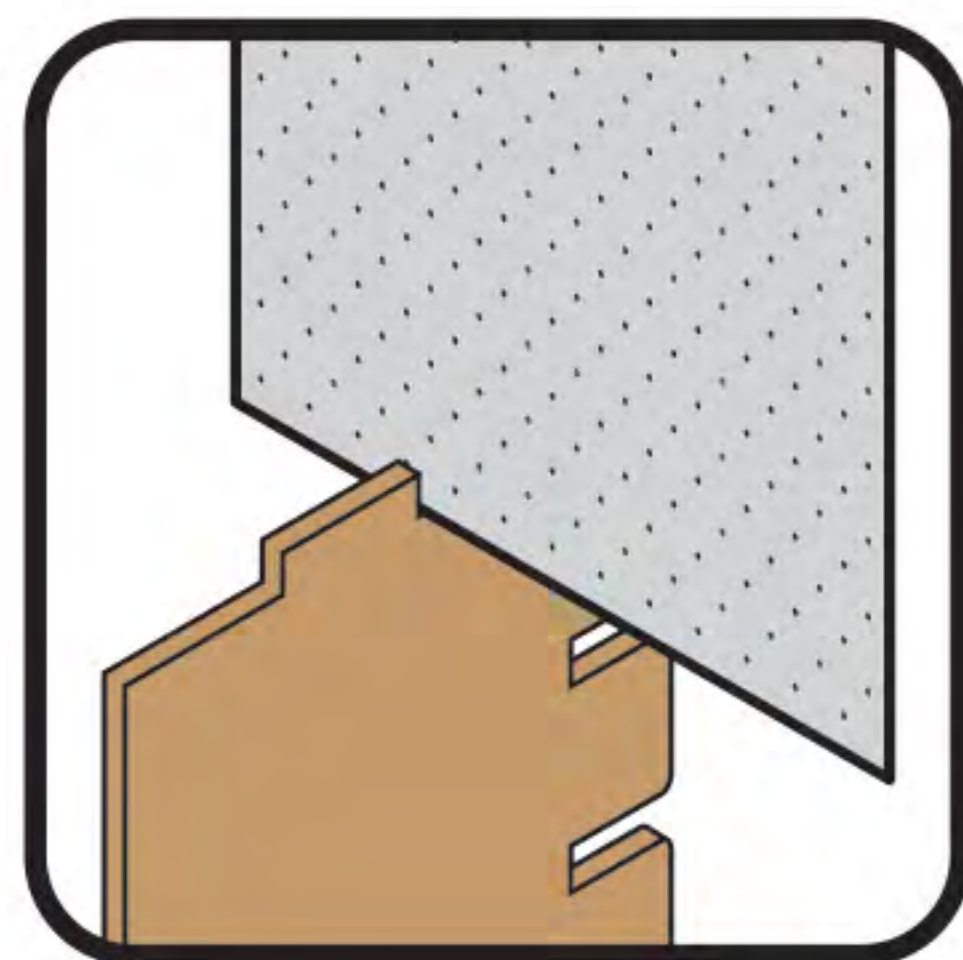
# Assembly Tips and Tricks



Remove parts from the frame by rotating them back and forth until they easily break free.



Trim off any excess wood with a hobby knife.



Tight pieces can be sanded, or trimmed with a hobby knife, to create a better fit.

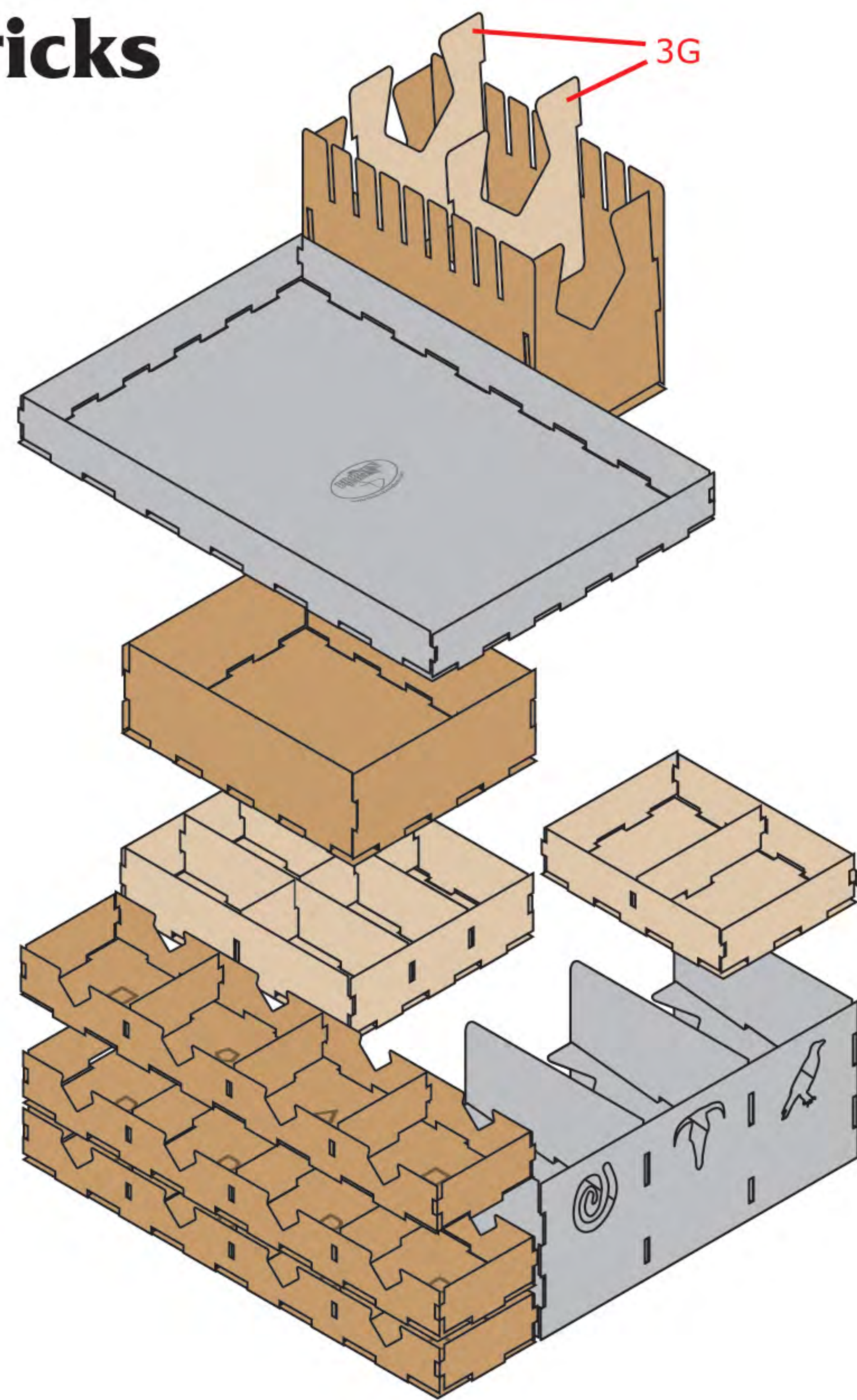


Loose pieces may be assembled with a small amount of wood glue.

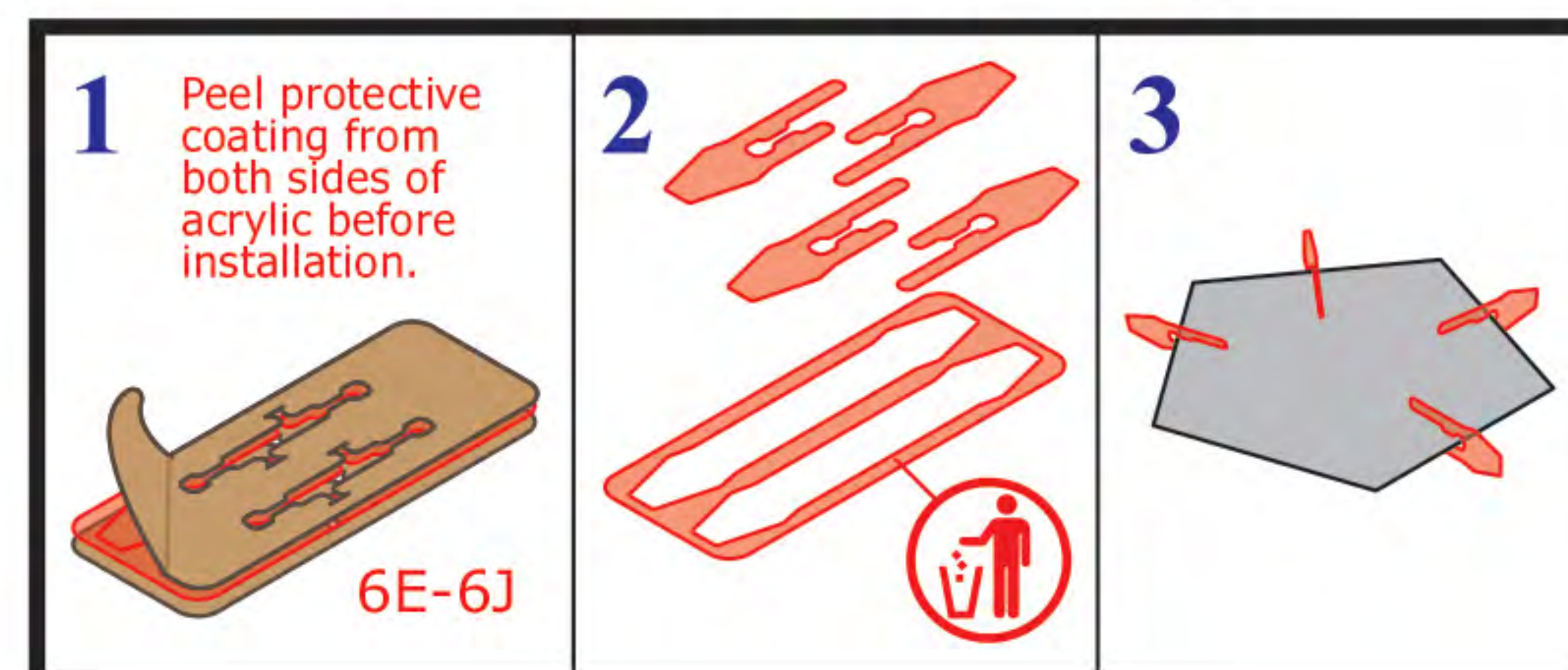
We recommend using glue for any removable trays or parts that are handled frequently.



Gently tap pieces together with a mallet, hammer or other blunt object.



## Character Tile Clips



See more assembly tips and product videos on YouTube:  
[youtube.com/thebrokentoken](https://www.youtube.com/thebrokentoken)  
 or contact us via through our website:  
[www.thebrokentoken.com/contact-us](http://www.thebrokentoken.com/contact-us)



[www.thebrokentoken.com](http://www.thebrokentoken.com)

@tbt\_gaming thebrokentoken thebrokentoken thebrokentoken



# BETRAYER ORGANIZER

compatible with  
**Betrayal at House on the Hill®**  
 and **Betrayal at Baldur's Gate™**



This organizer is compatible with Betrayal at House on the Hill® and Betrayal at Baldur's Gate™ and its expansions. This is a non-licensed product and all trademarks and copyrights are properties of their respective owners.

Product subject to change without notice. ©2017 The Broken Token, LLC.  
 Visit [thebrokentoken.com](http://thebrokentoken.com) for our full line of gaming organizers and accessories.

Warning: Not a toy. Not suitable for children under 14 years of age. Usage under parental guidance or guidance of adults only.

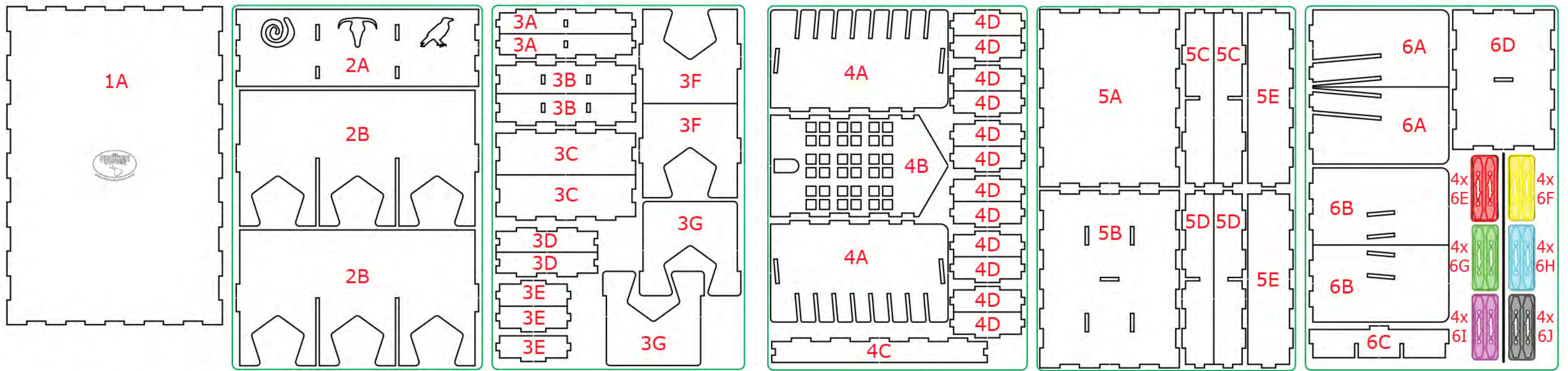


ORG052





# Assembly Instructions



Thank you for purchasing our Betrayer Organizer. If you have any questions about assembly, please don't hesitate to contact us through our website.

Note: Glue should be used on all joints. Wood glue is recommended.

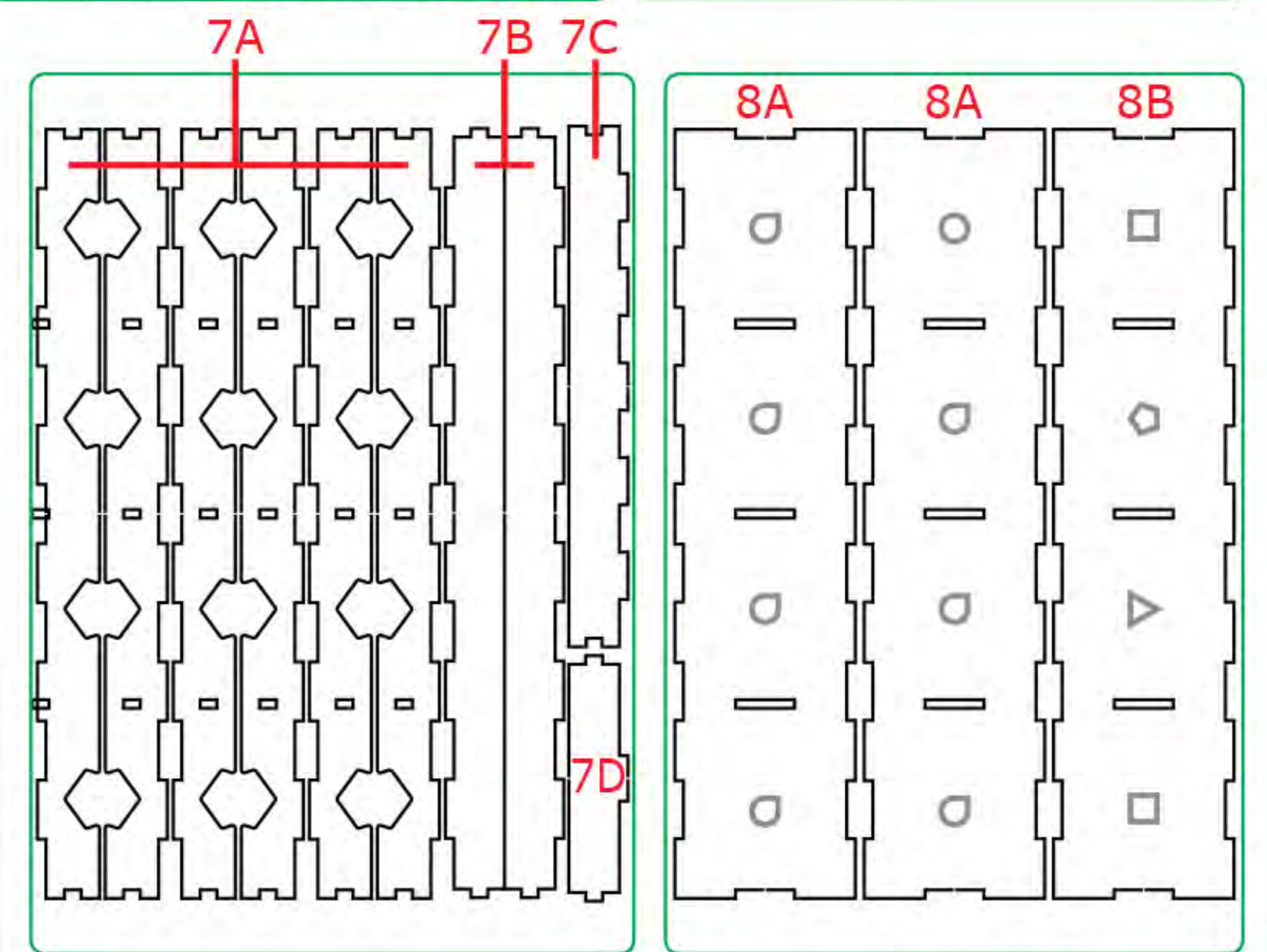
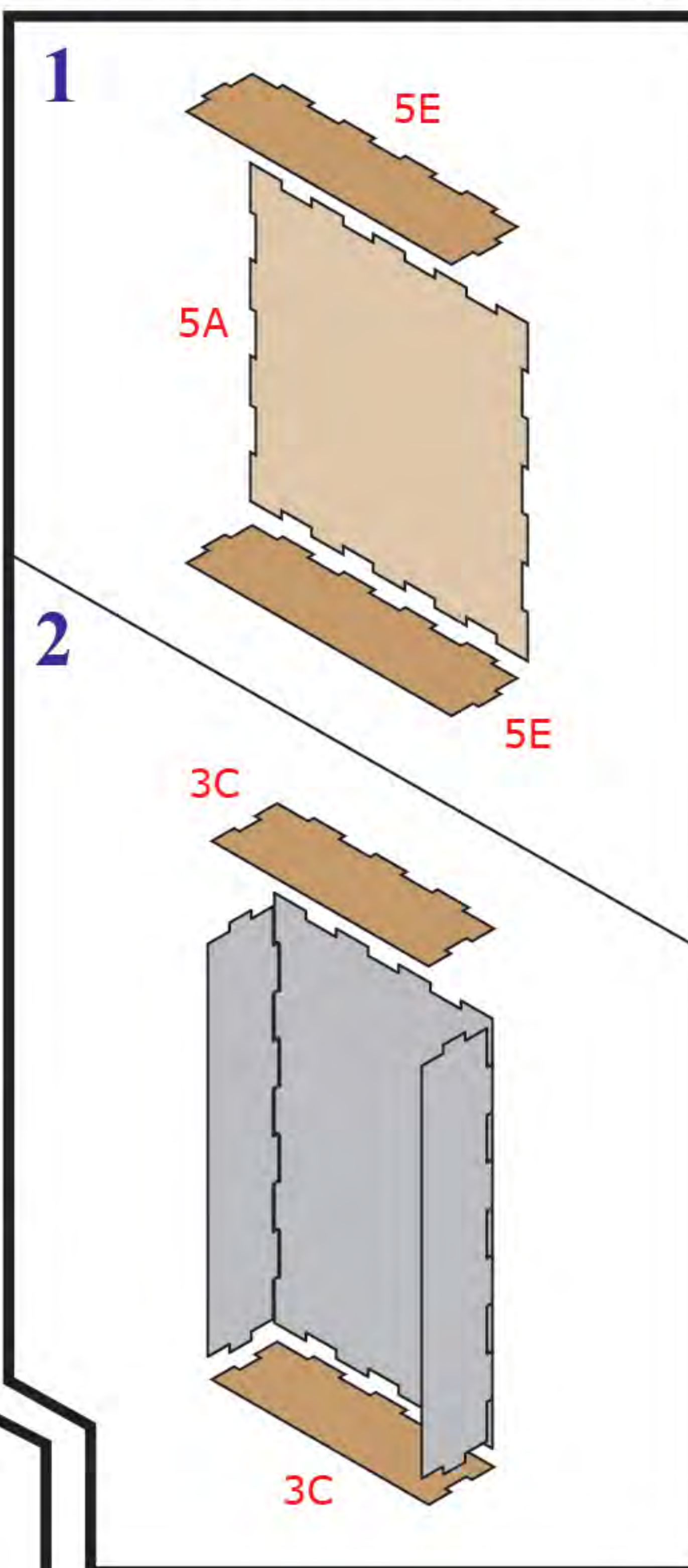
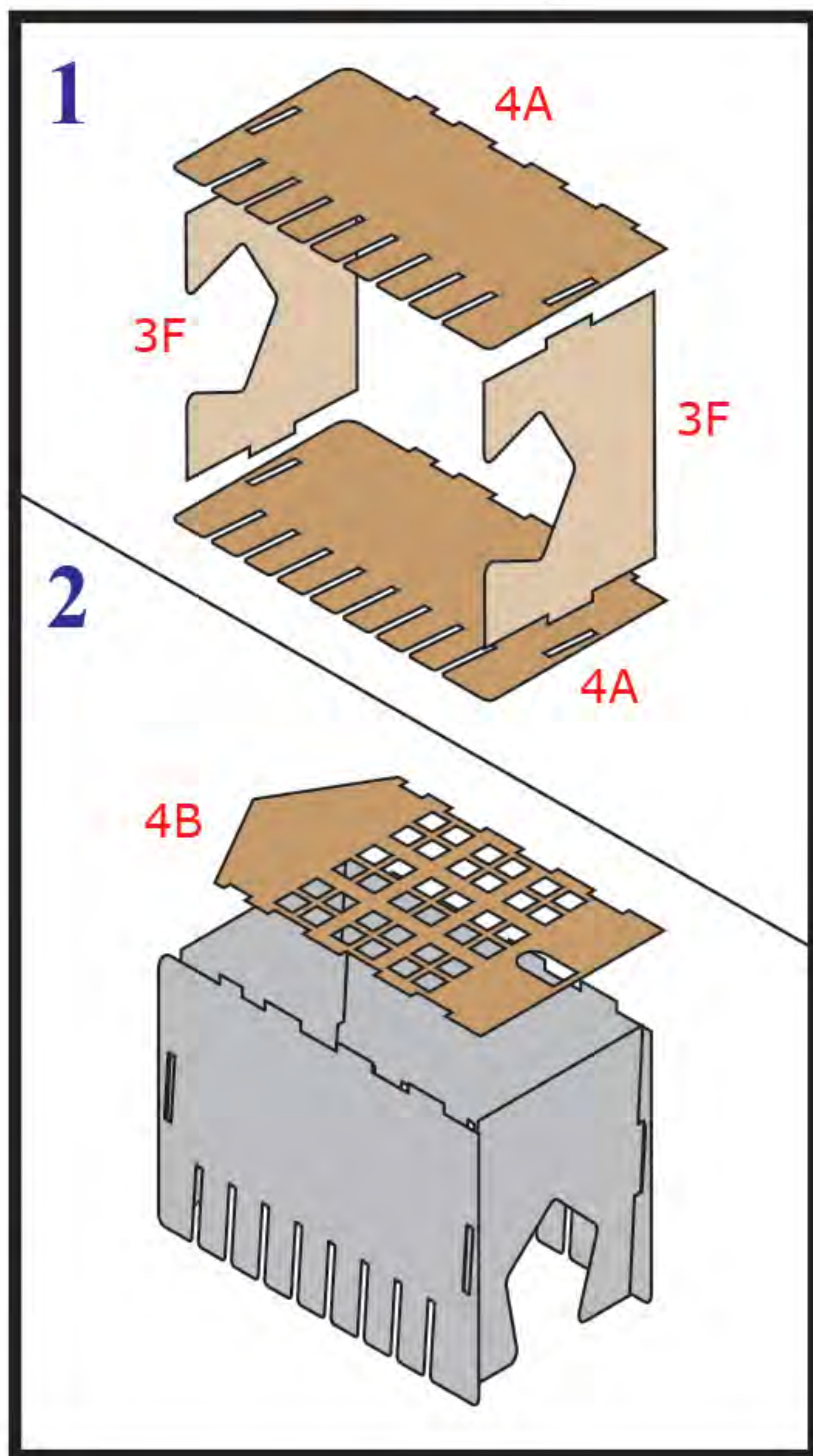
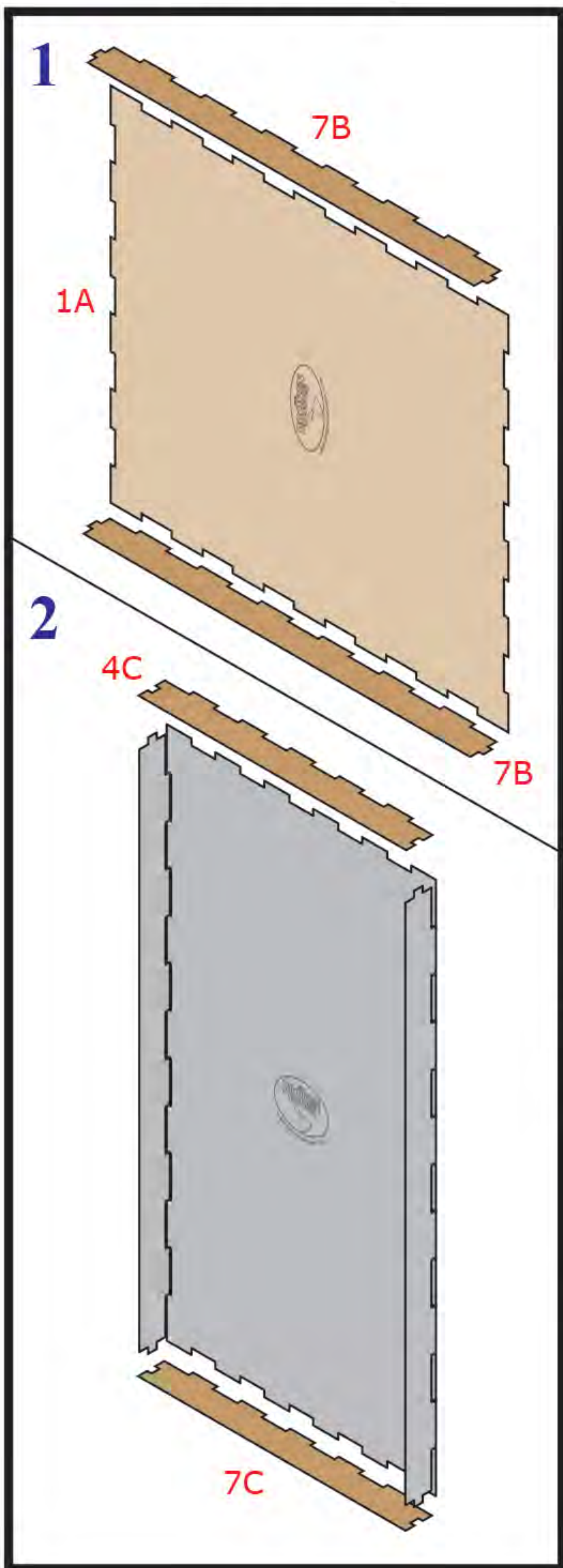


## Book Tray

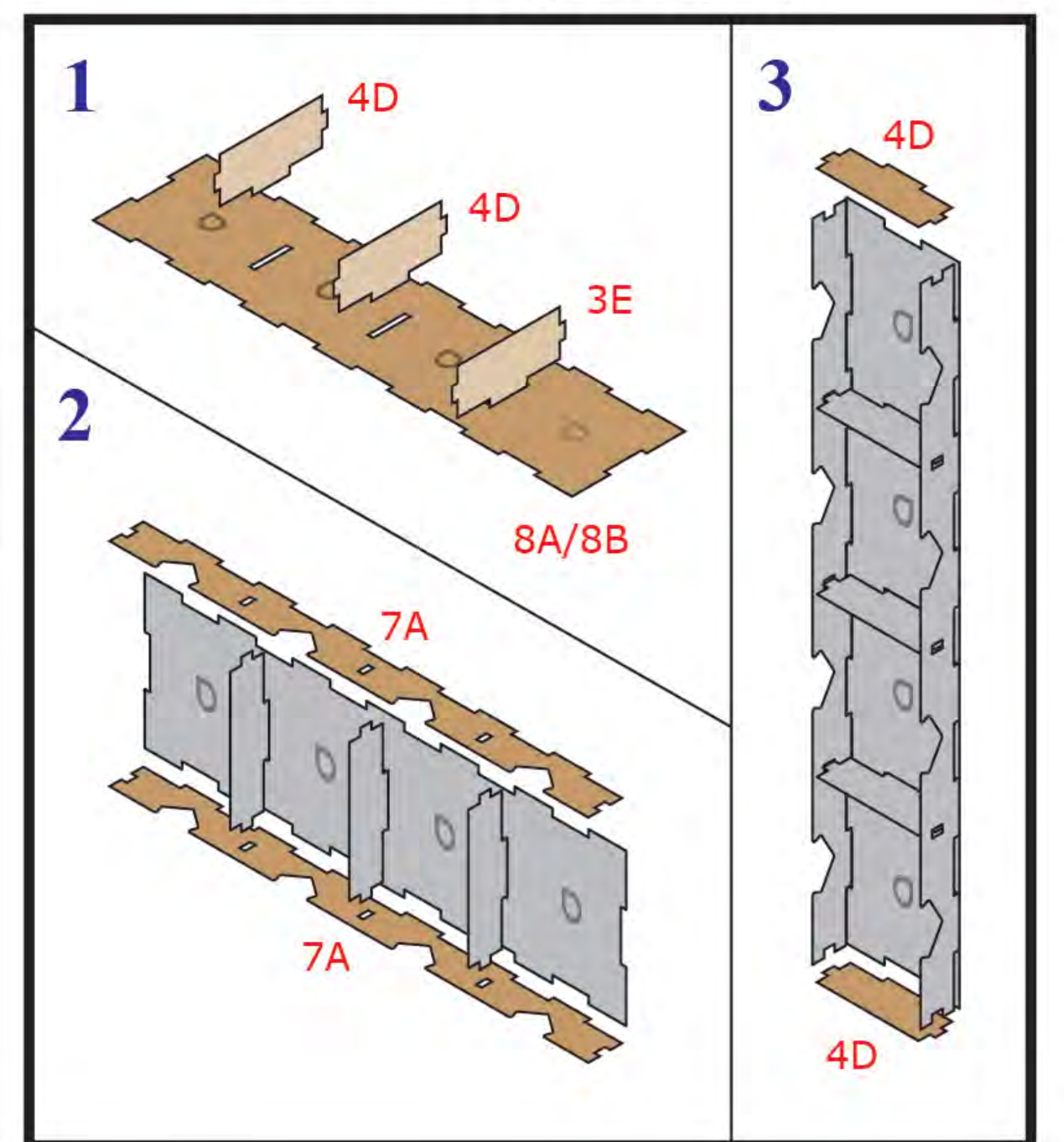
## Tile Tray

## Character Card Tray

## Token Trays B (x3)



## Token Tray A



## Character Token Tray

## Card Tray

